

**DESCRIPTION**

Designer Series™ 2-Station Wall-Mounted Counter Top Sink.

**DETAILS**

- Material: Corian or Quartz
- Width: 60" (1,524mm)

**FEATURES**



Two Station Lavatory System with the following features:

- Dimensions: 60" x 24" x 5"
- A monolithic console available in Corian or quartz
- Undermount bowls available in vitreous china or solid surface
- ADA compliant if Installed properly
- Multiple mounting options
- Basins can be sized to project requirements
- Many customization options - see architectural worksheet for all options
- Easy installation
- Pairs great with Sloan faucets and soap dispensers

**COLORS**

- For a complete list of Corian® colors:  
<http://www.corian.com/-colors-of-corian-r->
- For a complete list of Corian® quartz colors:  
<https://www.corianquartz.com/-colors-of-quartz->

**SUGGESTED FAUCETS**

	Name	Description
	EBF-650	<a href="#">View more info</a>
	EBF-615	<a href="#">View more info</a>

**VIDEOS**

-  Sink Configurator

**COMPLIANCES & CERTIFICATIONS**

IGC156

(ADA Compliant, BAA Compliant, IGC156)

**RECOMMENDED SPECIFICATION**

Sloan Designer Series Sink model no. DSCT 8X000 Countertop Style Sink. Product to be fabricated out of Corian or quartz with vitreous china or solid surface undermount bowls. Sloan automated sensor faucet. Sloan sensor operated foam soap dispenser. Sink design to be ADA compliant and IAPMO certified. Supplied with angle brackets.

**DOWNLOADS**

- [DSOF/DSG/DSWD/DSCT-80000 Installation Instructions](#)
- [Additional Downloads](#)

**NOTES**

All information contained within this document subject to change without notice.

Many customization options – see [architectural worksheet](#) for all options

[Find a compatible faucet](#) for this sink.

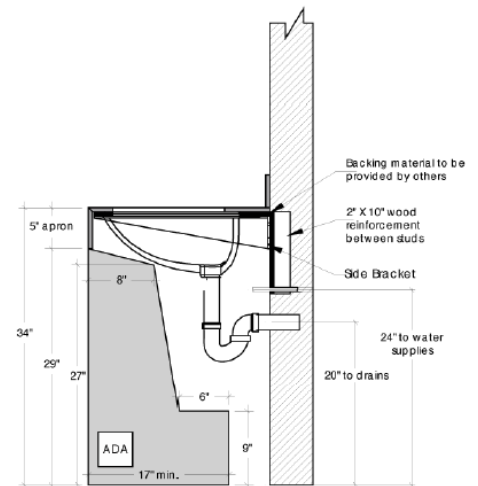
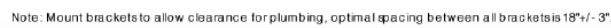
[Find a matching soap dispenser](#) for this sink.

**WARRANTY**

[View Warranty Information](#)

Technical drawing of a double-bowl sink with dimensions and labels:

- Overall width: 60"
- Overall depth: 24"
- Distance between bowl centers: 30"
- Distance from left edge to first bowl center: 15" typ.
- Distance from bowl center to faucet hole: 6" typ.
- Faucet hole size:  $\varnothing 1 \frac{1}{4}"$  typ.
- Soap hole size:  $\varnothing 1"$  Soap hole typ.



Page 2 of 2