

CODE NUMBER

SGV-7900 & SGV-7905-PB

DESCRIPTION

Sensor Urinal Flush Valve with 0.5 Lpf Wall Plate in Polished Brass.

COMPOSITION

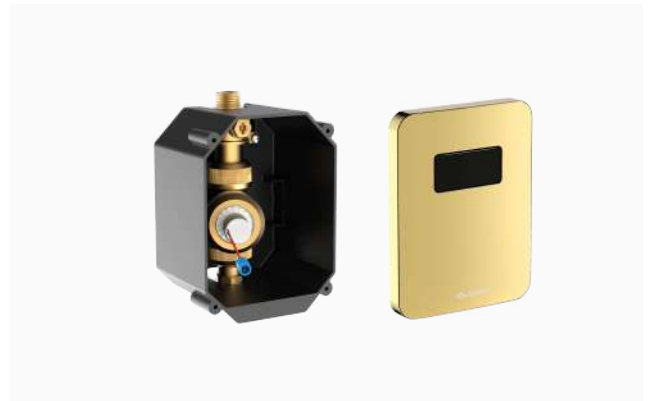
- Valve Body: 33440001 (SGV-7900)
- Wall Plate: 33440008 (SGV-7905-PB)

DETAILS

- Power Type: Battery with Hardwired Option
- Valve: Diaphragm
- Flush Volume: 0.5 Lpf
- Fixture Type: Urinal
- Flush Mechanism: Single
- Fixture Connection: Top or Rear Spud
- Wall Box: Front Accessible
- Control Stop: Integrated
- Wall Plate Finish: Polished Brass (PB)
- Inlet & Outlet: G 1/2"

FEATURES

- Polished Brass finish, corrosion-resistant and vandal-resistant metal wall plate
- Sloan water resistant electronic PCB
- Wait delay time - 1 sec
- Includes four (4) AA size batteries
- Easy repairable valve assembly in installed condition
- Ball valve for turning supply line On-Off in installed condition
- Can be installed on 6" wall
- Strong concealed box using flame retardant HDPE material that can withstand harsh construction conditions
- Mud guard for protection from debris during installation Valve
- Body & Sensor Wall Plate are sold separately



RECOMMENDED SPECIFICATION

Valve shall be concealed with front access wall plate smaller than 6.3" x 5" and shall have integrated control stop.

ELECTRICAL SPECIFICATIONS

- Arming Delay: 8 seconds
- Battery Life: 5 years
- Control Circuit: 6 VDC Input Solid State
- Sensor Range: 22" - 30" (559 - 762mm)
- Solenoid Operator: 6 VAC

VALVE OPERATING PRESSURE (FLOWING)

20-80 PSI (1.4-5.5 bar). Specific fixtures may require greater minimum flowing pressure - consult manufacturer requirements.

NOTES

All information contained within this document subject to change without notice.

ROUGH-IN

ROUGHING-IN

