

CODE NUMBER

TRF-8036 & TRF-8936-PB

DESCRIPTION

TruFlush Concealed Manual Electronic Dual Flushometer with 40mm Valve Body and Wall Plate in Polished Brass Finish for Water Closet.

COMPOSITION

- Valve Body: 34001003 (TRF-8036)
- Wall Plate: 34001032 (TRF-8936-PB)

DETAILS

- Full Flush Volume: 6.0 Lpf (1.6 gpf)
- Half Flush Volume: 3.0 Lpf (0.8 gpf)
- Wall Plate Finish: Polished Brass (PB)
- Power Type: Battery
- Battery Life: 5 years
- Valve: Piston
- Bypass: Filtered
- Valve Body Material: Yellow Brass
- Fixture Type: Water Closet
- Fixture Connection: Rear Spud

FEATURES

- Polished Brass finish, corrosion-resistant, vandal resistant metal wall plate
- Sloan waterproof electronic PCB with tactile push buttons
- Electronic Solenoid actuated valve
- "Low Battery" Flashing LED
- Heavy duty brass valve body
- Piston color-coded by flush volume for easy identification
- Safety collar locks activation assembly to prevent access of internal components without shutting off water
- Replaceable piston assembly, accessible by removing front wall plate
- Concealed shut off sleeve adjusts flow rate
- Four (4) Size AA batteries included
- Ability to hardwire with battery backup
- Fixed Volume Piston with Filtered O-ring Bypass
- Inlet: 1-1/2" NPT (40 mm)
- Outlet: 1-1/2" NPSM (40mm)
- Valve Body & Wall Plate are sold separately



COMPLIANCES & CERTIFICATIONS



(ADA Compliant, GRIHA, GreenPro)

RECOMMENDED SPECIFICATION

Valve shall be concealed with front access wall plate smaller than 7" x 7" and shall have integrated control stop.

ELECTRICAL SPECIFICATIONS

- Arming Delay: 8 seconds
- Battery Life: 5 years
- Control Circuit: 6 VDC Input/Solid State
- Solenoid Operator: 6 VAC
- Transformers (sold separately):
- ELG-220 (Upto 5 flushometer)

VALVE OPERATING PRESSURE (FLOWING)

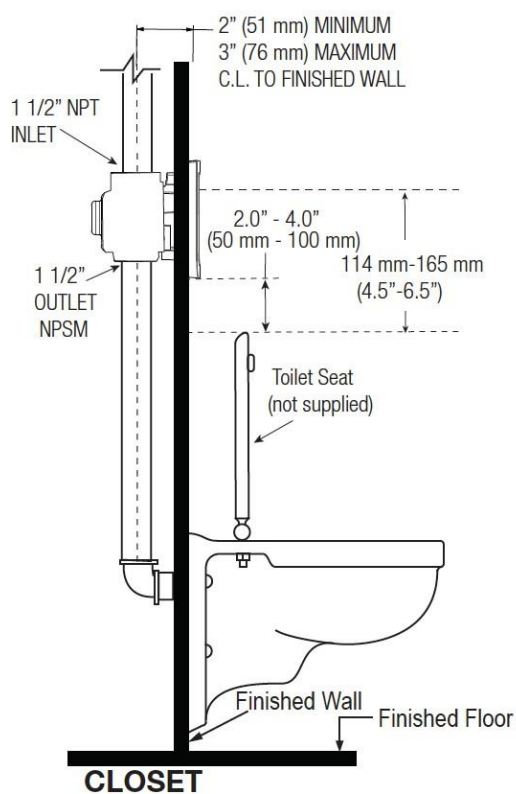
20-80 PSI. Specific fixtures may require greater minimum flowing pressure - consult manufacturer requirements.

NOTES

All information contained within this document subject to change without notice.

Battery life varies according to actual usage and restroom conditions.

ROUGH-IN



NOTE : Flush Connections shown in dotted lines not included.

