



**TruFlush Model:
TRF8000***

*Applicable for all finishes.

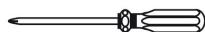
SLOAN® INDIA PRIVATE LIMITED — LIMITED WARRANTY SUMMARY

Sloan India Private Limited ("Sloan"), warrants its products against defects in materials and workmanship, excluding damage caused by matters beyond Sloan's reasonable control. Instructions for filing claims can be found in the Limited Warranty which can be obtained at <https://www.sloan.com/company/international/sloanindia> or by requesting a free copy by telephone to Sloan India toll free number 1 800 123 3080 or via Landline : +91 124 490 8588. Sloan will repair or replace your defective product, or provide a refund, as your exclusive remedy. This is only a general summary of Sloan's Limited Warranty so it is important to note that the specific terms, conditions, limitations and exclusions, including the duration of warranty coverage for your particular Sloan product, are contained in the actual Sloan Limited Warranty. The Limited Warranty is subject to applicable laws in your country, state, province or other jurisdiction—and disputes arising under the Limited Warranty are to be resolved by binding arbitration unless you provide Sloan with an opt-out notice no later than 30 days after your purchase date. In case of a conflict with this summary, the terms and conditions set forth in the complete Limited Warranty will prevail.

PRIOR TO INSTALLATION

This valve is designed for new construction or where there is easily access plumbing for the fixture and the valve. The valve is designed for minimum six inch (152 mm) wall space depth. Distance from center of the valve (inlet or outlet pipe) to the finished surface of the wall can vary from 2"-3" (51-76 mm). Wall opening must be 5.6" x 5.6" (142 x 142 mm). Mud plate is provided and must accompany valve for proper installation. Mud plate is removed after wall is finished.

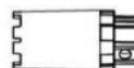
TOOLS REQUIRED FOR INSTALLATION



Phillips Screwdriver



Flathead Screwdriver



Adjusting Tool (Supplied)



Wire Stripper Tool

ITEMS INCLUDED WITH THE PRODUCT

WALL PLATE BOX

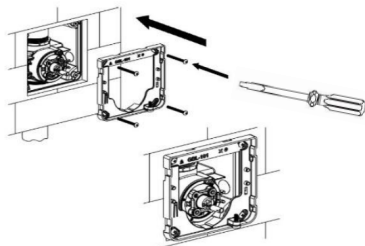
- | | | | | | | | |
|-----------------|---------------|-----------------|-----------------|------------------|-------------------|--------------|-----------------|
| 1. Wall Bracket | 2. Wall Plate | 3. PCB Assembly | 4. Battery Pack | 5. (4) Batteries | 6. 8-32x2" Screws | 7. Allen Key | 8. Instructions |
|-----------------|---------------|-----------------|-----------------|------------------|-------------------|--------------|-----------------|
-

CONNECT FLUSHOMETER

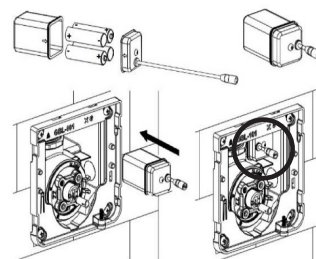
Refer to the Valve Assembly Installation Manual (08160063/08160054).

1. INSTALL WALL PLATE ASSEMBLY

1. Remove the mudguard by unscrewing the two screws and discard the mudguard.
2. Mount the Wall Bracket to valve and secure it using the #8-32x2" screws.

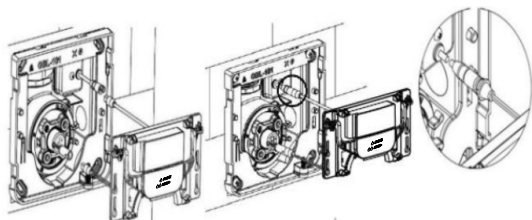


3. Open the battery pack by unscrewing the lid screw. Insert the (4) batteries into the battery pack as shown and close the lid by tightening the screw.
4. Insert the battery pack on right side of valve as shown.



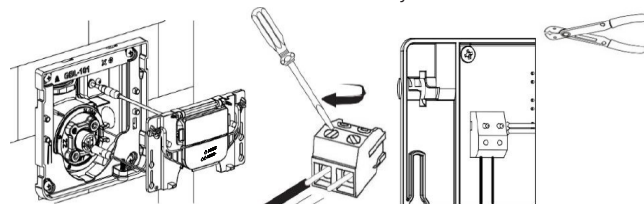
4. Connect the battery pack black connector to the black connector on the PCB Assembly. Connect Solenoid grey connector to the grey connector on the PCB Assembly.

NOTE: Red LED will start blinking when power is connected to the PCB Assembly.



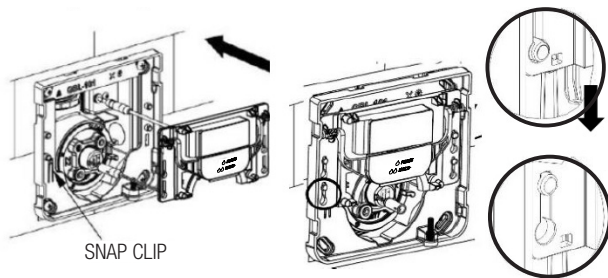
!!! ONLY FOR HARDWIRE CONNECTION !!!

- 5a. Using the wire stripping tool, strip the ends of the transformer wire that was routed when installing the valve.
- 5b. Insert wire in blue terminal block and tighten terminal screws.
- 5b. Connect the terminal block to the PCB Assembly as shown.



1. INSTALL WALL PLATE ASSEMBLY, CONTINUED

6. Align the 4 slots on the PCB Assembly with the mounting pegs on the Wall Bracket and slide the PCB Assembly all the way down.



7. **SENSOR OPERATION:** After power is applied, the Sensor Module will perform its Start-up routine for 3 minutes 30 seconds with LED blinking. **IMPORTANT: During this time, stay clear of the area in front of the sensor for proper automatic calibration.**

NOTE: A three (3) seconds long Red LED, followed by slow Red LED blinking in the sensor window indicated the sensor is in the start-up mode. There will be two (2) Red LED pulses (each two (2) seconds long) in the sensor window to indicate the start-up routine is complete.

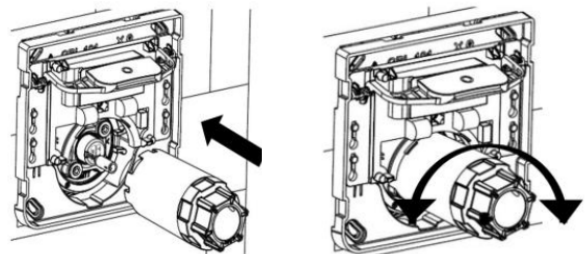
After the start-up routine is complete, in the first ten (10) minutes of operation, a visible Red LED flashes in the sensor window when a user is detected.

Sensing time for half flush is < one (1) minute, and for full flush is > one (1) minute.

Button press time for half flush is < one (1) second, and for full flush is > one (1) second.

8. Disconnect the Solenoid connector and lift the button as shown. Use the adjusting tool to turn the activation assembly clockwise (to lessen the flow) or anticlockwise (to increase the flow).

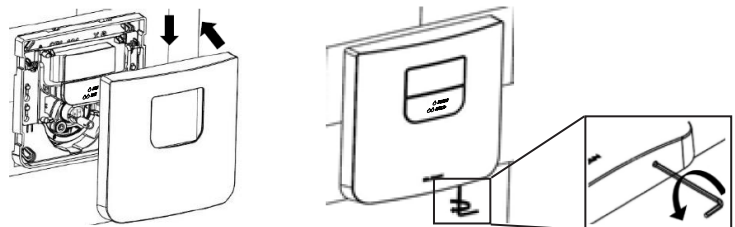
9. Reconnect the Solenoid and check the flow by flushing. Repeat as needed.



10. Make sure the retaining screw is fully tightened. Slide the PCB Assembly all the way up and align the wall plate cutout with the PCB Assembly as shown.

11. Push the wall plate all the way in then slide the wall plate down. Use the Allen key to unscrew the retaining screw until it touches the wall plate. Make sure the wall plate is completely fixed.

NOTE: DO NOT UNSCREW ANYMORE ONCE THE RETAINING SCREW TOUCHES THE WALL PLATE.



CARE AND CLEANING

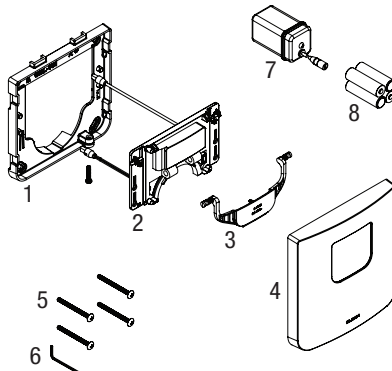


DO NOT use abrasive or chemical cleaners (including chlorine bleach) to clean Flushometers that may dull the luster and attack the chrome or special decorative finishes. Use ONLY mild soap and water, then wipe dry with clean cloth. While cleaning the bathroom tile, protect the Flushometer from any splattering off cleaner. Acids and cleaning fluids will discolor or remove chrome plating.

PARTS LIST

ITEM NO. DESCRIPTION

- 1 Wall Bracket with Insert
- 2 GBL Closet Sensor Assembly
- 3 Activation Button
- 4 CP Wall Plate
- 5 #8-32x2" Truss Head Phillips HD
- 6 Allen Key 5/64 Across Hex
- 7 Battery Pack
- 8 Batteries (4 "AA" Size)



!!! IMPORTANT !!!

THE FLUSHOMETER IS ENGINEERED FOR QUIET OPERATION. EXCESSIVE WATER FLOW CREATES NOISE, WHILE TOO LITTLE WATER FLOW MAY NOT SATISFY THE NEEDS OF THE FIXTURE. PROPER ADJUSTMENT IS MADE WHEN PLUMBING FIXTURE IS CLEANSED AFTER EACH FLUSH WITHOUT SPLASHING WATER.

THE ACTIVATION ASSEMBLY SHOULD NEVER BE OPENED TO THE POINT WHERE THE FLOW FROM THE VALVE EXCEEDS THE FLOW CAPABILITY OF THE FIXTURE. IN THE EVENT OF VALVE FAILURE, THE FIXTURE MUST BE ABLE TO ACCOMMODATE.

SLOAN INDIA PRIVATE LIMITED • 344, PHASE-II UDYOG VIHAR, GURGAON 122015

Phone: (+91) 124-4908588 • Toll Free: 1800.123.3080 • customercare@sloan.in • www.sloan.in