

## INSTALLATION INSTRUCTIONS FOR TRUFLUSH MANUAL CLOSET AND URINAL WALL PLATE

### TruFlush Models:

GBL200A MANUAL  
PLATE ASM-XX



**XX - Applicable for all finishes.**

### Sloan® India Private Limited - Limited Warranty Summary

Sloan India Private Limited ("Sloan"), warrants its products against defects in materials and workmanship, excluding damage caused by matters beyond Sloan's reasonable control. Instructions for filing claims can be found in the Limited Warranty which can be obtained at <https://www.sloan.com/company/international/sloan-india> or by requesting a free copy by telephone to Sloan India toll free number 1 800 123 3080 or via Mobile: +91 729 005 0961 or via Landline : +91 124 601 3333. Sloan will repair or replace your defective product, or provide a refund, as your exclusive remedy.

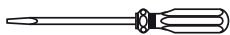
This is only a general summary of Sloan's Limited Warranty so it is important to note that the specific terms, conditions, limitations and exclusions, including the duration of warranty coverage for your particular Sloan product, are contained in the actual Sloan Limited Warranty. The Limited Warranty is subject to applicable laws in your country, state, province or other jurisdiction—and disputes arising under the Limited Warranty are to be resolved by binding arbitration unless you provide Sloan with an opt-out notice no later than 30 days after your purchase date. In case of a conflict with this summary, the terms and conditions set forth in the complete Limited Warranty will prevail.

## PRIOR TO INSTALLATION

Wall must be finished with complete valve assembly installed.  
For more information about valve installation refer Valve Assembly Installation Manual (08160047).

Wall plate opening must be minimum of 4" x 4" (102 x 102 mm) to maximum of 4.5" x 4.5" (114 mm x 114 mm). Mud plate is provided and must accompany valve for proper installation. Mud plate is removed after wall is finished.

## TOOLS REQUIRED FOR INSTALLATION



• Philips screwdriver



• 5/64" hex wrench (supplied)



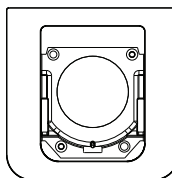
• Wall plate depth guide- (supplied)

## ITEMS INCLUDED WITH THE PRODUCT

### WALL PLATE BOX

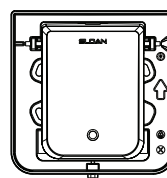
1. Wall plate
2. Button and bracket assembly
3. (3) #10-32 x 2-1/2 screws to secure bracket to valve
4. (2) #8-32 x 7/8 screws to secure plate to valve
5. Depth setting tool
6. (3) #10-32 and locking nut for plunger
7. Allen Key
8. Installation instructions

1. Wall Plate



2. Button/Bracket

Assembly



3. Bracket to Valve

Screws



6. Locking nut for  
Plunger Screws



4. Plate to Valve

Screws



7. Allen Key



5. Depth Setting Tool



8. Instructions



## 1. CONNECT FLUSHOMETER

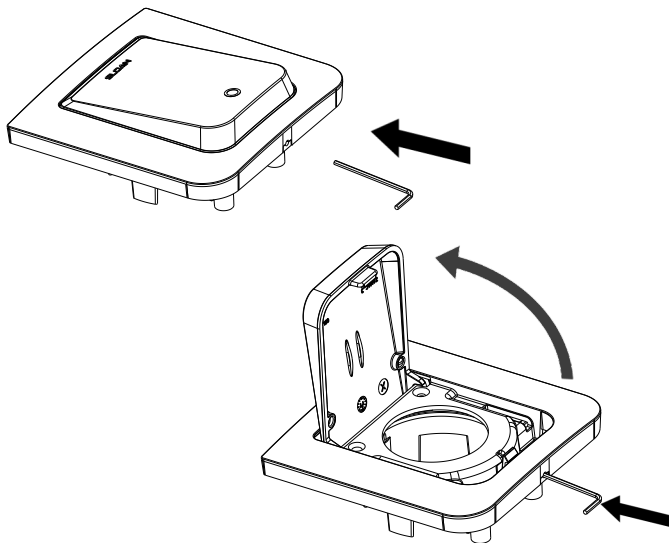
Refer Valve Assembly Installation Manual (08160047).

## 2. ADJUST CONTROL FLOW

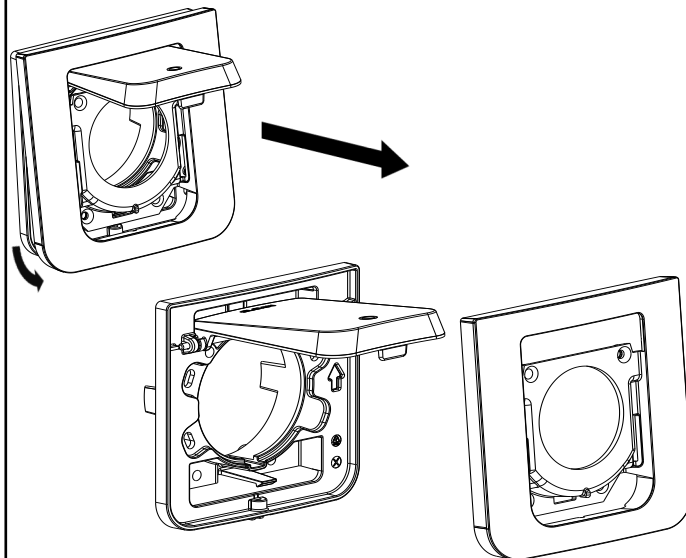
Refer Valve Assembly Installation Manual (08160047).

### 3. INSTALL BUTTON/BRACKET ASSEMBLY

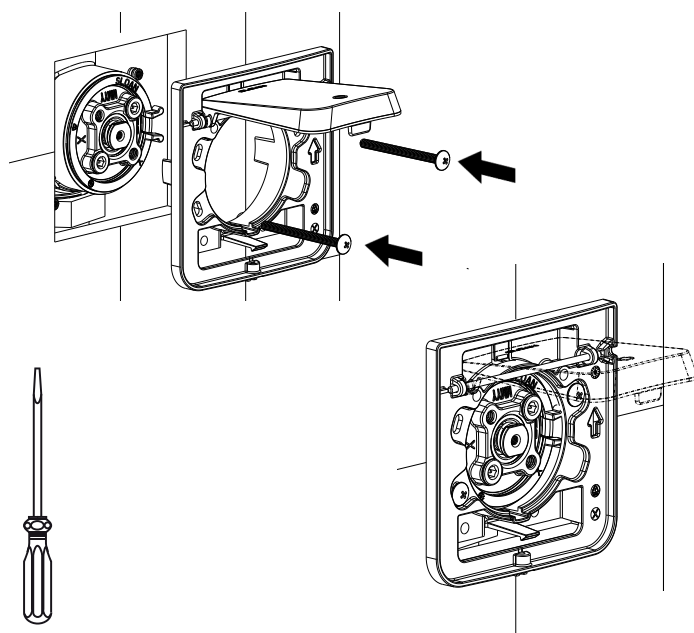
1. Insert the 5/64" Allen key in the hole at the bottom of the wall plate assembly and push it in to snap open the button and then lift the button by 90° until button locks in place.



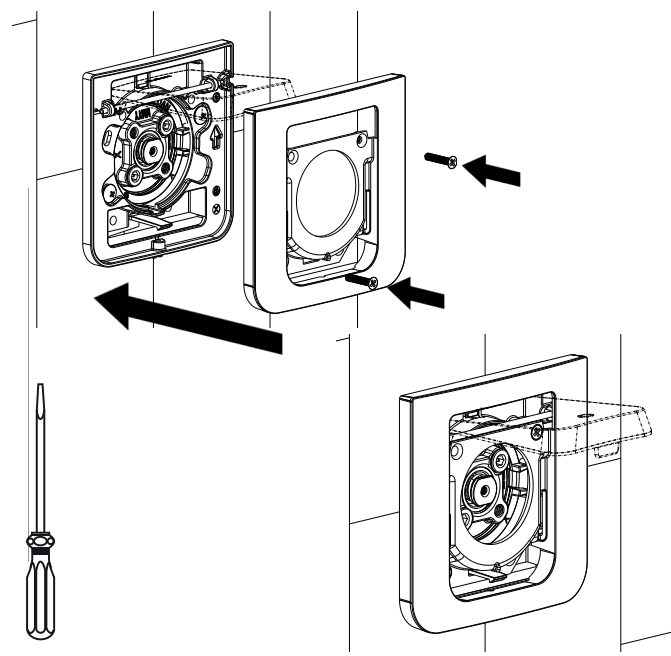
2. Remove the Face Plate by tilting it up from bottom and then pulling it out.



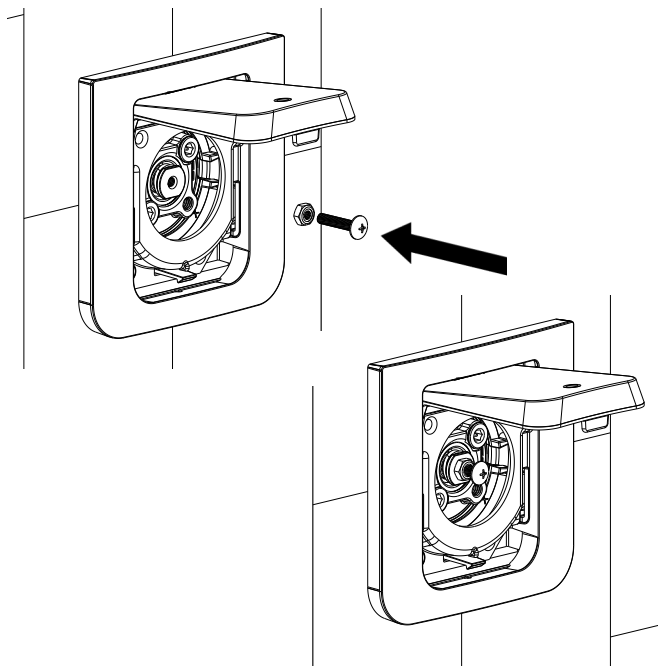
3. Mount the Wall Bracket to valve and secure it using the Bracket to Valve Screws (Supplied).



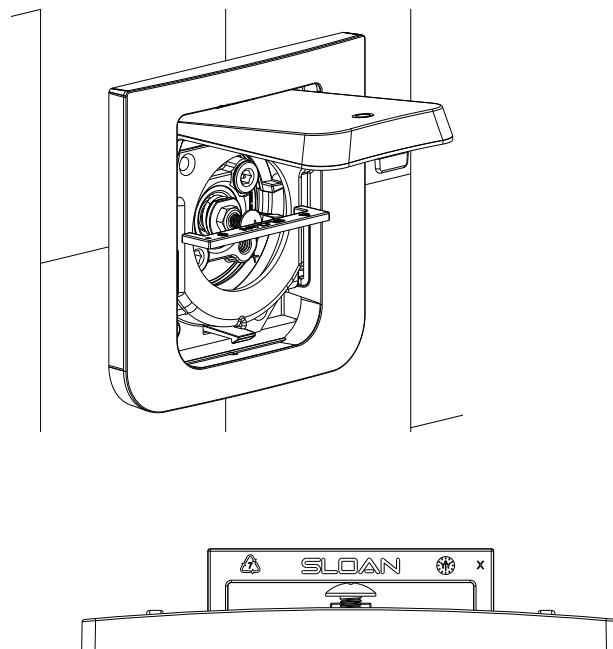
4. Mount the Face plate and on the black Wall Bracket and secure it using the Plate to Valve Screws (Supplied).



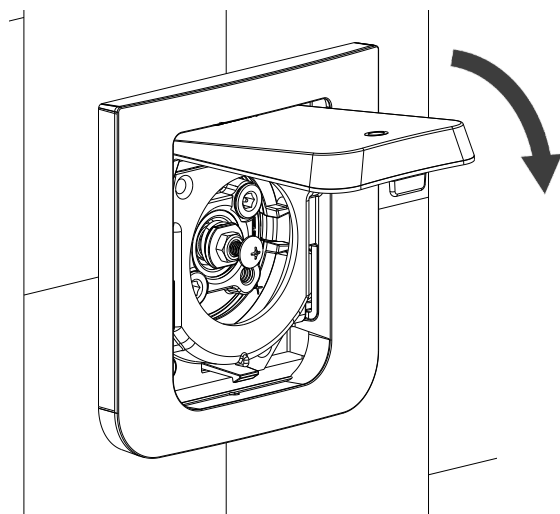
5. Choose one of three plunger screws and nut provided and thread into plunger. If Plunger starts rotating, STOP. This means the screw has reached the bottom of the hole and over-tightening the screw will cause damage to the Plunger. Try the next shorter screw included with the product to finish adjustment. Using depth guide provided, adjust depth of plunger screw until screw touches depth guide (use provided alternate length screws if necessary) and secure with nut.



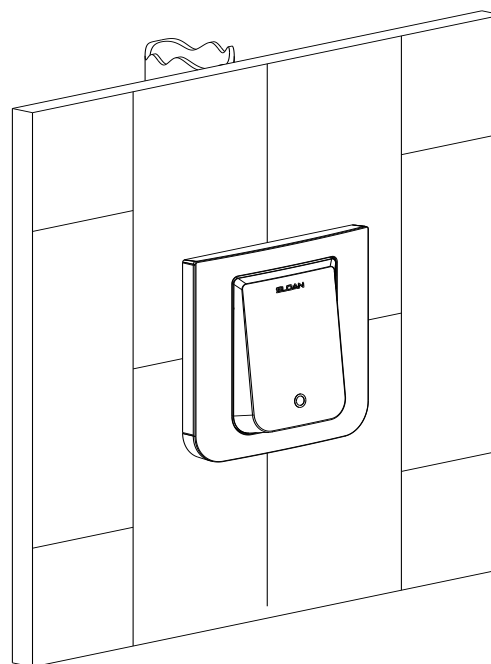
6. Use the depth guide (Supplied), adjust depth of plunger screw until screw touches depth guide (use provided alternate length screws if necessary) and secure with nut.



7. Rotate the button 90° back to lock it in place.

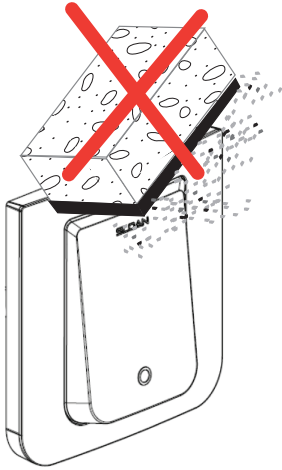


8. Test flush by pushing button (make sure that button is not pushing the screw when not being pressed).



## CARE AND CLEANING

DO NOT use abrasive or chemical cleaners (including chlorine bleach) to clean Flushometers that may dull the luster and attack the chrome or special decorative finishes. Use ONLY mild soap and water, then wipe dry with clean cloth or towel. While cleaning the bathroom tile, protect the Flushometer from any splattering of cleaner. Acids and cleaning fluids will discolor or remove chrome plating.



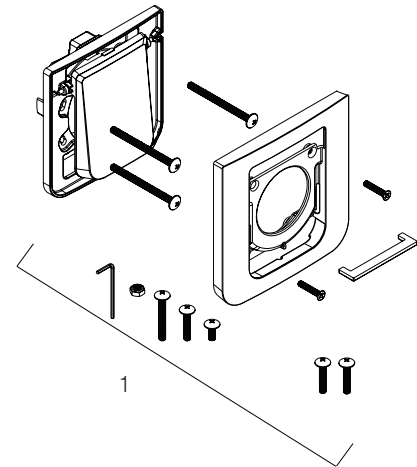
## PARTS LIST

Item No.	Part No.	Description
1	GBL-200-A	Wall Plate Assembly

VALVE ASSEMBLY LESS PLATE SELECTION GUIDE		
Code No.	Part No.	Description
3400005IN	TRF 156-1.6 LP	Manual Valve Assembly 1.6 gpf/6.0 Lpf
3400006IN	TRF 156-1.28 LP	Manual Valve Assembly 1.28 gpf/4.8 Lpf
3400007IN	TRF 196-0.5 LP	Manual Valve Assembly 0.5 gpf/1.9 Lpf
3400008IN	TRF 196-0.25 LP	Manual Valve Assembly 0.25 gpf/1.0 Lpf
3401010	TRF 156-1.6-N *	Manual Valve Assembly 1.6 gpf/6.0 Lpf
3401006	TRF 156-1.28-N *	Manual Valve Assembly 1.28 gpf/4.8 Lpf
3401007	TRF 196-0.5-N *	Manual Valve Assembly 0.5 gpf/1.9 Lpf
3401008	TRF 196-0.25-N *	Manual Valve Assembly 0.25 gpf/1.0 Lpf
34000005	TRF 156-1.1-N *	Manual Valve Assembly 1.1 gpf/4 Lpf

\*\*Part No. "-N" Refers to Valve Assembly For 32mm Plumbings.



**Valve Assembly Installation Manual (08160047),  
available on [www.sloan.in](http://www.sloan.in)**

**For complete listing of items available for repair,  
please consult Maintenance and Repair Guide.**

Code No. 08160049  
Rev. 03 (05/24)

**SLOAN INDIA PRIVATE LIMITED**

Manufactured by Sloan India Pvt. Ltd, patents pending.